

Delft Clock©

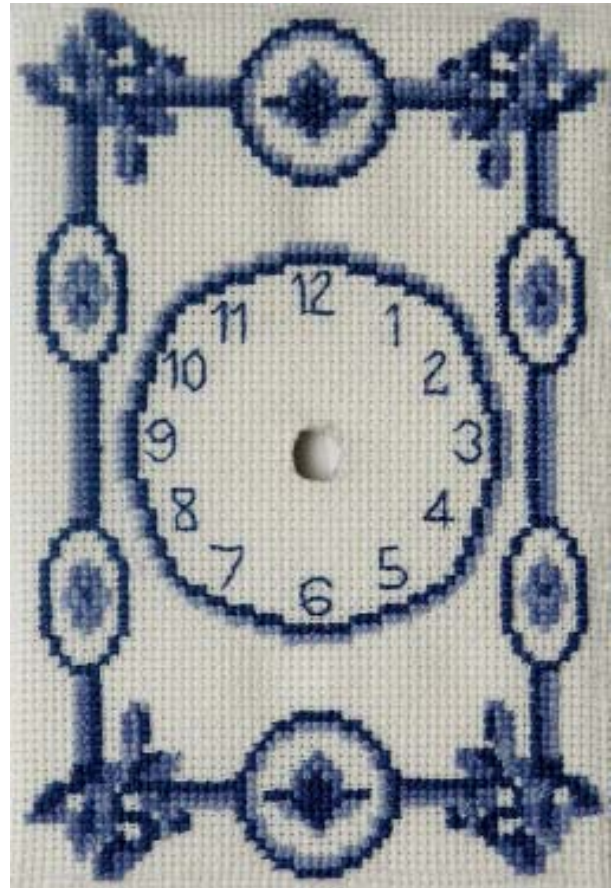
Design by Laura Doyle

#3601 14ct 4.46" x 6.45" (113x164mm)

#3602 18ct 3.47" x 5.02" (88x127mm)

Metlr Sulky DMC

| | | | |
|-----------------|-----|------|------|
| 1. Baby Blue | 672 | 1289 | 3325 |
| 2. Baby Blue-DK | 498 | 1028 | 334 |
| 3. Navy Blue-MD | 675 | 1143 | 312 |



Stitches = 16136

Illustrated at right:

Left-purchased royal blue frame

Right-Sudberry Carriage Clock (#48041) with design #3602



Dedham Rabbits©

Design by Laura Doyle



Stitches = 27091

#3603 16ct 10.04" x 1.77" (255x45mm)

#3604 18ct 9.37" x 1.65" (238x42mm)

| | Metlr. | Sulky | DMC |
|--------------------|--------|-------|-------|
| 1. Snow White | 002 | 1001 | B5200 |
| 2. Baby Blue-VY LT | 962 | 1151 | 775 |
| 3. Baby Blue-LT | 672 | 1289 | 3325 |
| 4. Baby Blue-MD | 498 | 1028 | 334 |
| 5. Baby Blue-VY DK | 675 | 1143 | 312 |

Marker color of your choice

6. Coral-DK or one of above

Illustrated at right with #3604 design stitched twice-
(see joining instructions below.)

Top-Table runner

Middle-Sudberry Nantucket Creel Purse # 30035

Bottom-Hat band

Instructions to join

After stitching color stop #6, measure and record the distance from the end of the hoop to this marker, and re-hoop using the same distance from the other end of the hoop with a new sewing field. Stitch color stop #6 again before starting with #1 and adjust the fabric in the hoop so that it lines up closely to you first set of marks. (We suggest to do this first rough adjustment without any thread in the needle) Run a few stitches and note their location relative to the marker stitches. At this point, adjust with the machine position arrows for exact needle position. (You may have to reload the design to make the necessary fine final adjustments.)

Note: As in the original Dedham pottery, each bunny has different shading! For a stencil appearance, stitch just the first two colors on navy fabric.



Joys to be Quilted©

Design by Ursula Micheal

#3605 14ct 5.74" x 7.58" (146x193mm)

#3606 16ct 4.78" x 6.32" (121x161mm)

#3607 18ct 4.46" x 5.90" (113x150mm)

Metlr Sulky DMC

| | | | |
|--------------------|-----|------|------|
| 1. Baby Blue-VY DK | 675 | 1143 | 312 |
| 2. Baby Blue-MD | 498 | 1028 | 334 |
| 3. Delft Blue-Pale | 672 | 1289 | 3325 |
| 4. Baby Blue-VY LT | 962 | 1151 | 775 |

Backstitches

| | | | |
|--------------------|-----|------|------|
| 5. Baby Blue-VY DK | 675 | 1143 | 312 |
| 6. Delft Blue-Pale | 672 | 1289 | 3325 |



Stitches = 33525

Illustrated at right:

Sudberry Shaker Clock/Peg Rack
#10131 with design #3605



Sand Dollar©

Design by Laura Doyle

#3608 14ct 3.90" x 3.76" (99x95mm)

#3609 16ct 3.25" x 3.13" (83x79mm)

#3610 18ct 3.03" x 2.93" (77x74mm)

Metlr Sulky DMC

| | | | |
|--------------------|-----|------|-------|
| 1. Snow White | 002 | 1001 | B5200 |
| 2. Baby Blue-VY LT | 962 | 1151 | 775 |
| 3. Baby Blue-LT | 672 | 1289 | 3325 |
| 4. Baby Blue-MD | 498 | 1028 | 334 |
| 5. Baby Blue-VY DK | 675 | 1143 | 312 |
| 6. Navy Blue-MD | 916 | 643 | 311 |



Stitches = 23128

Note:

1. Do not stitch color step #6 if stitching on a dark fabric (leave open)

2. If stitching on knitted fabric, stitch Color #1 then skip to darker colors (4-5-6) to retain the shape in the center of the design. Then return to colors 2 and 3

Illustrated at right:

T-shirt with design #3609

**Sudberry Petite Walnut Box #99861
and design #3609**



House Teapot©

Design by Laura Doylel

#3611 14ct 7.09" x 6.24" (180x158mm)

#3612 16ct 5.91" x 5.20" (150x132mm)

#3613 18ct 5.51" x 4.85" (140x123mm)



Stitches = 59510

Metlr Sulky DMC

| | | | |
|-----------------------|------|------|-------|
| 1. Snow White | 002 | 1001 | B5200 |
| 2. Pearl Gray-VY LT | 713 | 1268 | 762 |
| 3. Baby Blue-LT | 962 | 1289 | 3325 |
| 4. Baby Blue-MD | 498 | 1028 | 334 |
| 5. Wedgewood-DK | 554 | 1196 | 517 |
| 6. Navy Blue-DK | 675 | 1143 | 823 |
| 7. Pink-MD | 610 | 1115 | 776 |
| 8. Rose-MD | 805 | 1117 | 899 |
| 9. Pistachio Green-LT | 544 | 1047 | 368 |
| 10. Blue Green-MD | 681 | 1305 | 503 |
| 11. Blue Green-DK | 850 | 525 | 501 |
| 12. Yellow-LT Pale | 1067 | 922 | 745 |

Backstitches

| | | | |
|------------------|-----|------|-----|
| 13. Baby Blue-MD | 498 | 1028 | 334 |
| 14. Topaz | 767 | 1083 | 725 |

Illustrated below: Tea Cozy-with design #3611

Helpful Hint

Fold a 8 1/2x11 sheet of paper to 5 1/2 x 8 1/2 . With scissors round off one open corner. Open up - this is the pattern for the front and back of the tea cozy. Hold up to a tea pot to verify desired size or tape two patterns together and fit over tea pot. Personalize the back with an initial or message to the gift recipient. Seam together front and back with cording in the seam and a loop on top. For a bigger cozy, use a larger sheet of paper for the pattern and add a 3" wide gusset.



Blue Bouquet©

Design by Laura Doyle

#3614 14ct 4.96" x 9.28" (126x236mm)

#3615 16ct 4.13" x 7.74" (105x196mm)

#3616 18ct 3.86" x 7.22" (98x183mm)

| | Mtr. | Sulky | DMC |
|--------------------|------|-------|------|
| 1. Baby Blue-VY LT | 962 | 1151 | 775 |
| 2. Baby Blue-LT | 672 | 1289 | 3325 |
| 3. Baby Blue-MD | 498 | 1028 | 334 |
| 4. Wedgewood-DK | 554 | 1196 | 517 |
| 5. Baby Blue-VY DK | 675 | 1143 | 312 |

Note: Last color is full and backstitch



Stitches = 38300

Illustrated at right:

Blouse with design #3614

**Sudberry Mirror #2202G and
design #3616**



Blue Tile©

Design by Laura Doyle

#3617 14ct 5.03" x 5.03" (128x128mm)

#3618 16ct 4.19" x 4.19" (106x106mm)

#3619 18ct 3.91" x 3.91" (99x99mm)

| | Mtlr. | Sulky | DMC |
|--------------------|-------|-------|-------|
| 1. Baby Blue-LT | 672 | 1289 | 3325 |
| 2. Baby Blue-MD | 498 | 1028 | 334 |
| 3. Baby Blue-VY DK | 675 | 1143 | 312 |
| 4. White | 002 | 1001 | B5200 |



Stitches = 25232

**Note: Skip color #4 if stitching on white fabric.
Stitch #4 first on dark fabric.**

Illustrated below:

**Sudberry cheeseboard #95290 with
design #3617.**



Pa. Dutch Welcome Clock©

Design by Donna Giampa

#3620 14 5.03" x 5.03" (128x128mm)

#3621 16 4.19" x 4.19" (106x106mm)

#3622 18 3.91" x 3.91" (99x99mm)

Metlr. Sulky DMC

| | | | |
|--------------------|-----|------|------|
| 1. Baby Blue-VY LT | 962 | 1151 | 775 |
| 2. Baby Blue-LT | 672 | 1289 | 3325 |
| 3. Baby Blue-MD | 498 | 1028 | 334 |
| 4. Baby Blue-VY DK | 675 | 1143 | 312 |

CenterMark

5. Coral-LT Any color for centermark

Backstitch

| | | | |
|--------------------|-----|------|------|
| 6. Baby Blue-LT | 672 | 1289 | 3325 |
| 7. Baby Blue-VY DK | 675 | 1143 | 312 |



Stitches = 17035

Illustrated at right:

**Sudberry Bezel Clock
#48021 with design #3622**



Pa. Dutch Welcome©

Design by Donna Giampa

#3623 14 4.89" x 4.89" (124x124mm)

#3624 16 4.07" x 4.97" (103x103mm)

#3625 18 3.80" x 3.80" (97x97mm)

Metlr. Sulky DMC

| | | | |
|--------------------|-----|------|------|
| 1. Baby Blue-VY LT | 962 | 1151 | 775 |
| 2. Baby Blue-LT | 672 | 1289 | 3325 |
| 3. Baby Blue-MD | 498 | 1028 | 334 |
| 4. Baby Blue-VY DK | 675 | 1143 | 312 |

Backstitch

| | | | |
|--------------------|-----|------|------|
| 5. Baby Blue-LT | 672 | 1289 | 3325 |
| 6. Baby Blue-VY DK | 675 | 1143 | 312 |



Stitches 17104

Illustrated at right:

**Blue toile cloth apron from Adam
Original, Maple Grove MN, 55369
1-800-582-2326, with design #3623.**

**Sudberry Broider Box #99051 with
design #3624**



Sailing Ships©

Design by Ursula Micheal

#3626 18ct 5.84" x 5.84" (148x148mm)

| | Metlr. | Sulky | DMC |
|--------------------|--------|-------|-------|
| 1. White | 002 | 1001 | B5200 |
| 2. Baby Blue-VY LT | 962 | 1151 | 775 |
| 3. Baby Blue-LT | 672 | 1289 | 3325 |
| 4. Baby Blue-MD | 498 | 1028 | 334 |
| 5. Baby Blue-VY DK | 675 | 1143 | 312 |
| 6. Yellow Beige | 517 | 562 | 437 |
| 7. Sky Blue-VY LT | 561 | 1151 | 747 |
| 8. Sky Blue | 889 | 1145 | 519 |

Backstitches

| | | | |
|---------------------|-----|------|-----|
| 9. Baby Blue-VY DK | 675 | 1143 | 312 |
| 10. Coffee Brown-DK | 711 | 1129 | 801 |



Stitches = 78599

Illustrated at right:

**Sudberry Small Square Tray
#65641 with design #3626**

**Note: This design is
also perfect for clothing!**



Blue Rose/Heart with Initial©

Design by Donna Giampa

#3627 16ct 10.1" x 5.91" (257x150mm)

#3628 18ct 9.43" x 5.41" (239x140mm)

Metlr. Sulky DMC

| | | | |
|--------------------|-----|------|------|
| 1. Baby Blue-VY LT | 962 | 1151 | 775 |
| 2. Baby Blue-LT | 672 | 1289 | 3325 |
| 3. Baby Blue-MD | 498 | 1028 | 334 |
| 4. Baby Blue-VY DK | 675 | 1143 | 312 |

PERSONALIZATION

Step #5 is the inner border of the heart and the letter from alphabet which follows or you may use a letter from your machine program. We have used the same color as #4.



Sstitches = 60056

Helpful Hint!

Watch the machine and the bobbin supply during the long stitch times of this design. Trim jumpers before stitching the next color.

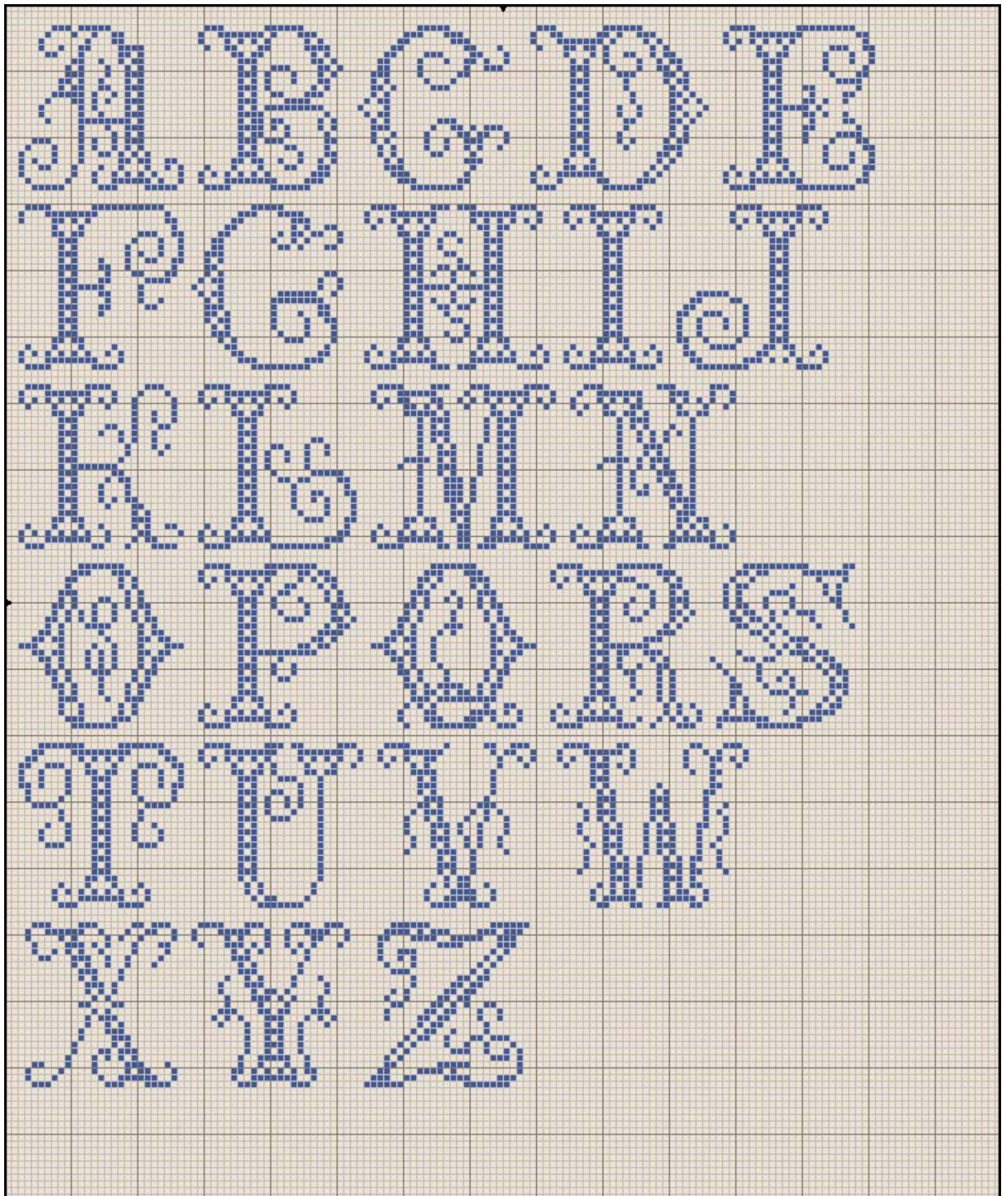
Illustrated at right:

Back-beginning of a neck-roll pillow with design #3628.

Front-Sudberry Tea Tray #80031 with design #3628.



Jewel Alphabet for use with Blue Rose Design #3627-28



Welcome Pineapple©

Design by Judy O'Bryan

#3629 14ct 4.04" x 5.88" (103x149mm)

#3630 16ct 3.37" x 4.90" (85x125mm)

#3631 18ct 3.14" x 4.57" (80x116mm)

Mtlr. Sulky DMC

Three Color

| | | | |
|-----------------|-----|------|------|
| 1. Dark Melon | 769 | 1558 | 3327 |
| 2. Yellow Beige | 511 | 562 | 437 |
| 3. Yellow Green | 678 | 1176 | 3346 |

Two Color

| | | | |
|---------------|----------------|------|-----|
| 1. Royal Blue | 790 | 1242 | 798 |
| 2. Navy Blue | 833 | 1293 | 796 |
| 3. Navy Blue | Repeat step #2 | | |

One Color

| | | | |
|-------------------|-----|-----|-----|
| 1. Navy Blue | 916 | 643 | 311 |
| 2. Repeat step #1 | | | |
| 3. Repeat step #1 | | | |



Stitches = 15810

Illustrated at right:

Back-Sudberry 18061 Crown
Plate with design #3630.

Left-Sudberry Handy Hook
#10221 with design #3631.

Right-Sudberry Handy Hook
#10322 with design #3631.



Stencil Pineapple©

Design by Judy O'Bryan

#3632 14ct 5.31" x 5.03" (135x128mm)

#3633 16ct 4.43" x 4.19" (113x106mm)

#3634 18ct 4.3" x 3.91" (105x99mm)

Use any fabric and thread color of your choice.



Stitches = 14208

Illustrated Below:

Sudberry Cheeseboard #95290 with design #3633

Sudberry Crown Plate #18061 with design #3633

